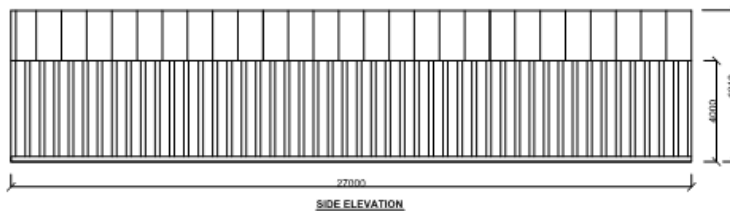
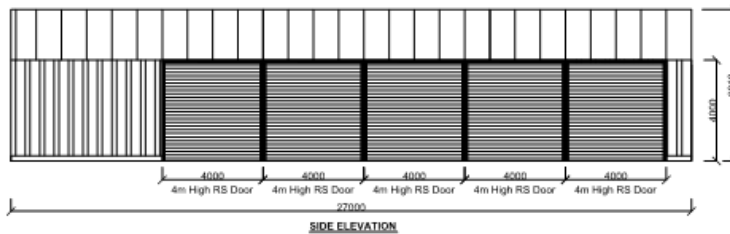
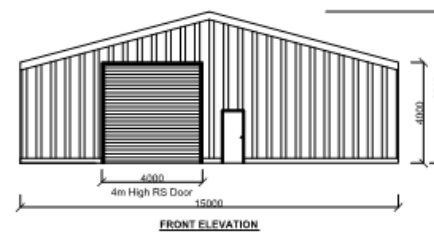
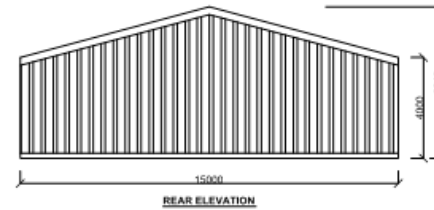
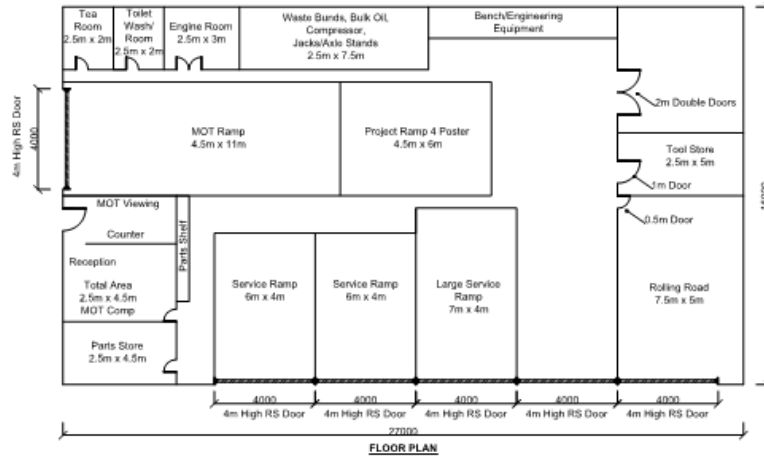


Proposed Building



Client: Thriplow Farms Limited			
Title: Proposed Industrial Building			
Tey Farm Systems Ltd Tel 01205 210003 Great Tey Business Centre, Waters Farm, Great Tey, COLCHESTER, COB 1JG			
Drawn By: SH	Date: MAR 2017	Scale: NTS	Draw No: 17/060/RF
Checked By: jg	The drawing and its contents are the property of Tey Farm Systems. These must not be disclosed to a third party without written consent from Tey Farm Systems.		

Overview & Process

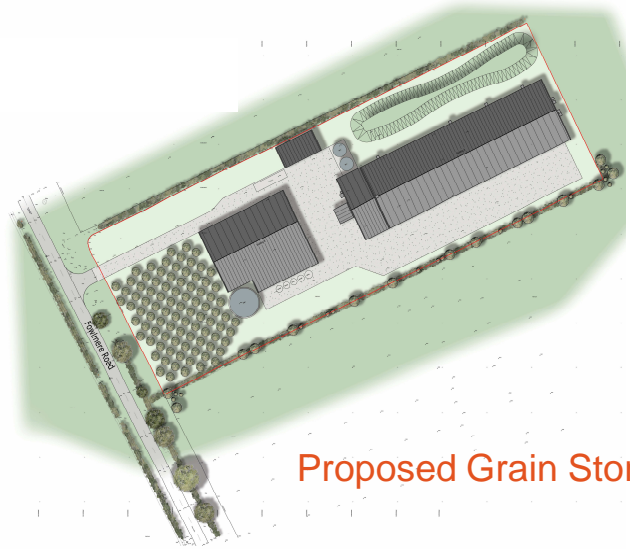
1. The three schemes are linked and rely on all three being successfully approved at the planning stage in order to implement them.
2. Each proposal will form its own planning application. Therefore, a total of three applications will be submitted in parallel to South Cambridgeshire District Council.
3. Following this meeting and feedback from South Cambridgeshire District Council, the designs will continue to be developed with the intention of submitting planning applications in September.

5.

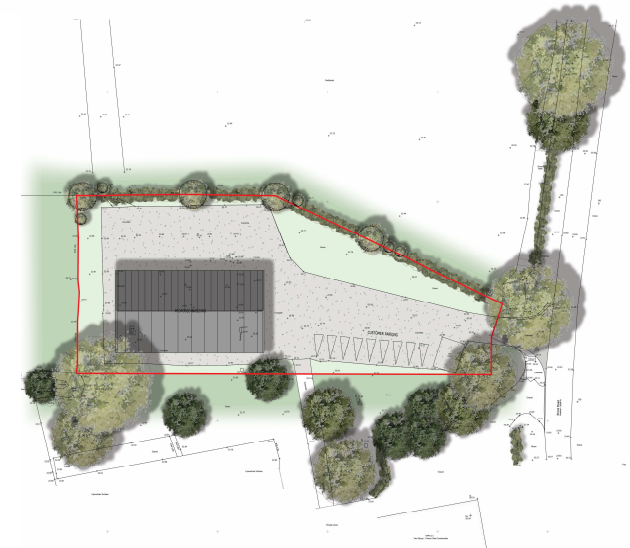
Questions



Proposed Residential



Proposed Grain Store



Proposed Revivals